

# SAM4S OPOS Set

## User Manual



## CONTENTS

1. OPOS SET INSTALLATION .....	3
2. ADD / DELETE AN OPOS DEVICE .....	5
3. ADD / RENAME / DELETE A LDN .....	10
4. CONFIGURATIONS FOR OPOS DEVICE .....	15
5. TESTING FOR OPOS DEVICE.....	18

## 1. OPOS SET Installation

1) Double Click the 'SAM4S\_OPOSSET.exe' to start installation



[Pic No.1] Installation File

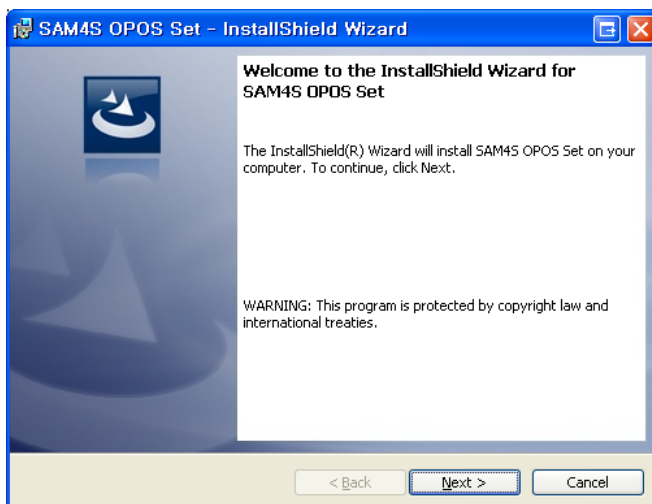
\* This manual is written based on the Windows XP Environment. Any specific requirement for the other OS will be mentioned.

\* .Net Framework 3.0 or above should have installed.

\* Supported Language: English Only

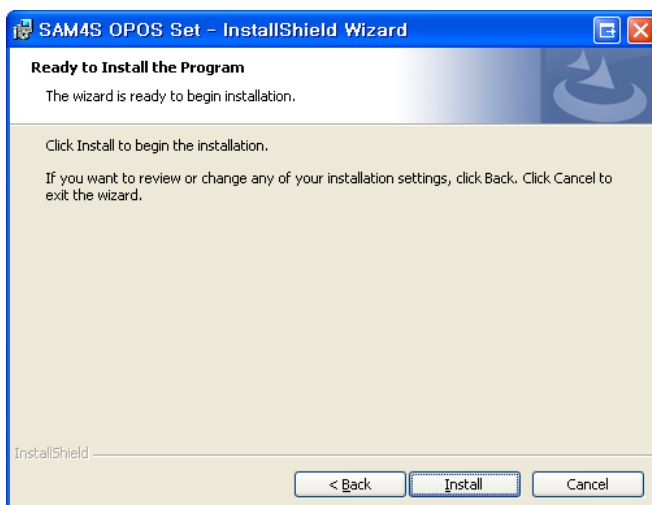
\* Supported OS: WePos, Windows XP, PosReady2009, PosReady7 (32bit, 64bit), Windows 7 (32bit, 64bit)

2) Begin the Installation



[Pic No.2] Begin the Installation

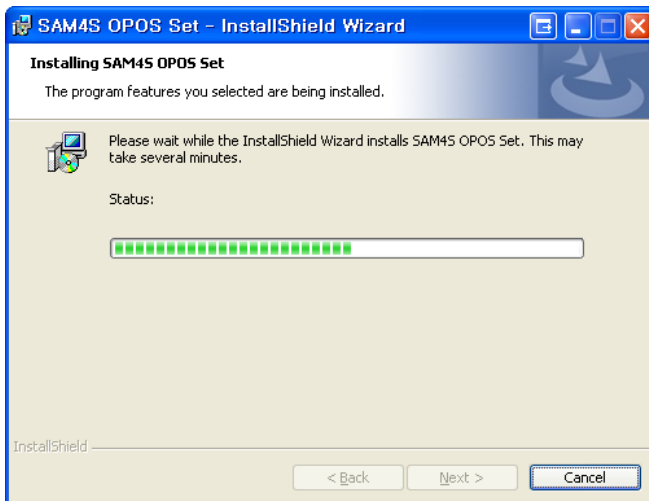
3) Ready to Install



[Pic No.3] Ready to Install

SHC-SW-02-OPOSSET\_UserManual(Eng)

#### 4) Installing the OPOS Set



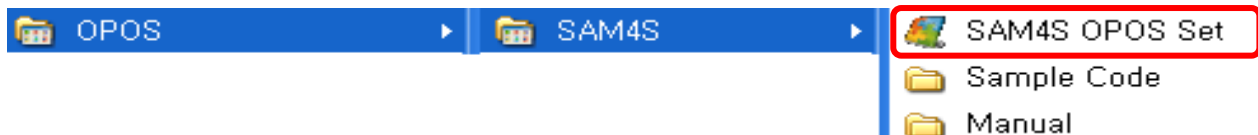
[Pic No.4] Installing the OPOS Set

#### 5) Completed the Installation



[Pic No.5] Completed the Installation

#### 6) After installing the OPOS Set, Shortcut will be created on the Start Menu>OPOS>SAM4S>OPOS Set

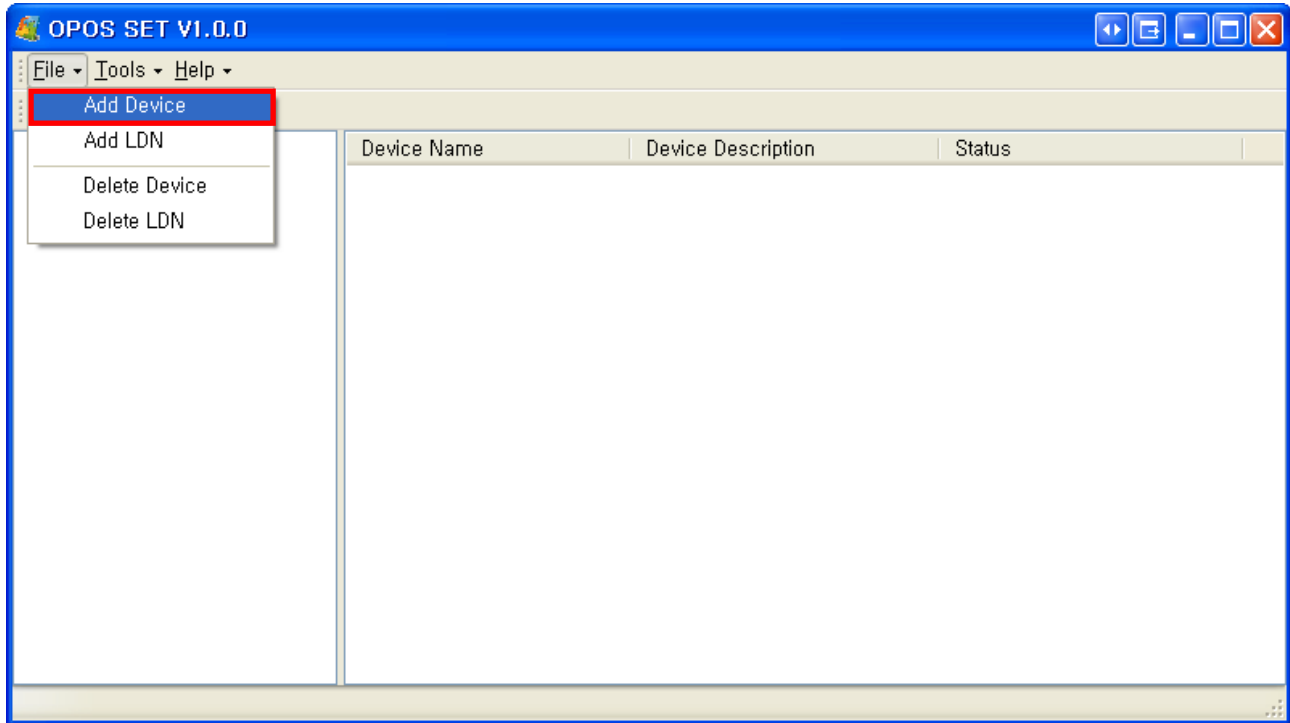


[Pic No.6] Start Menu

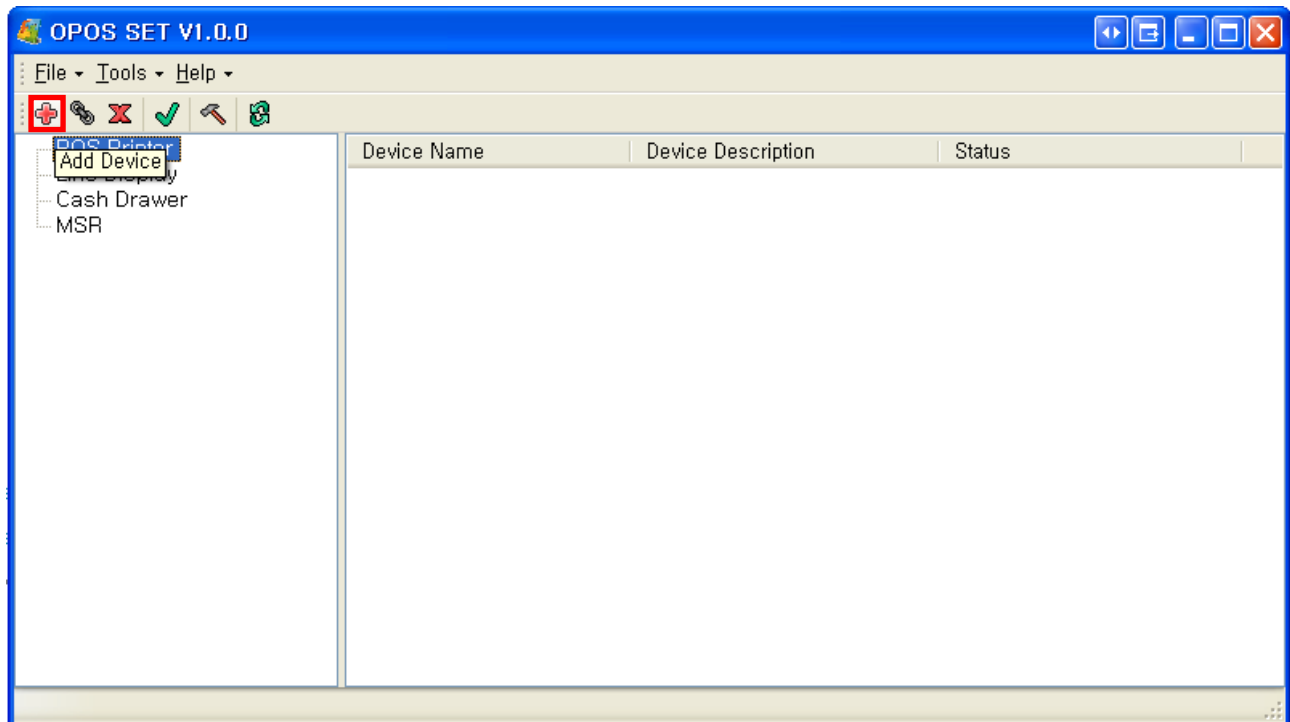
## 2. Add / Delete an OPOS Device

### ① Add an OPOS Device

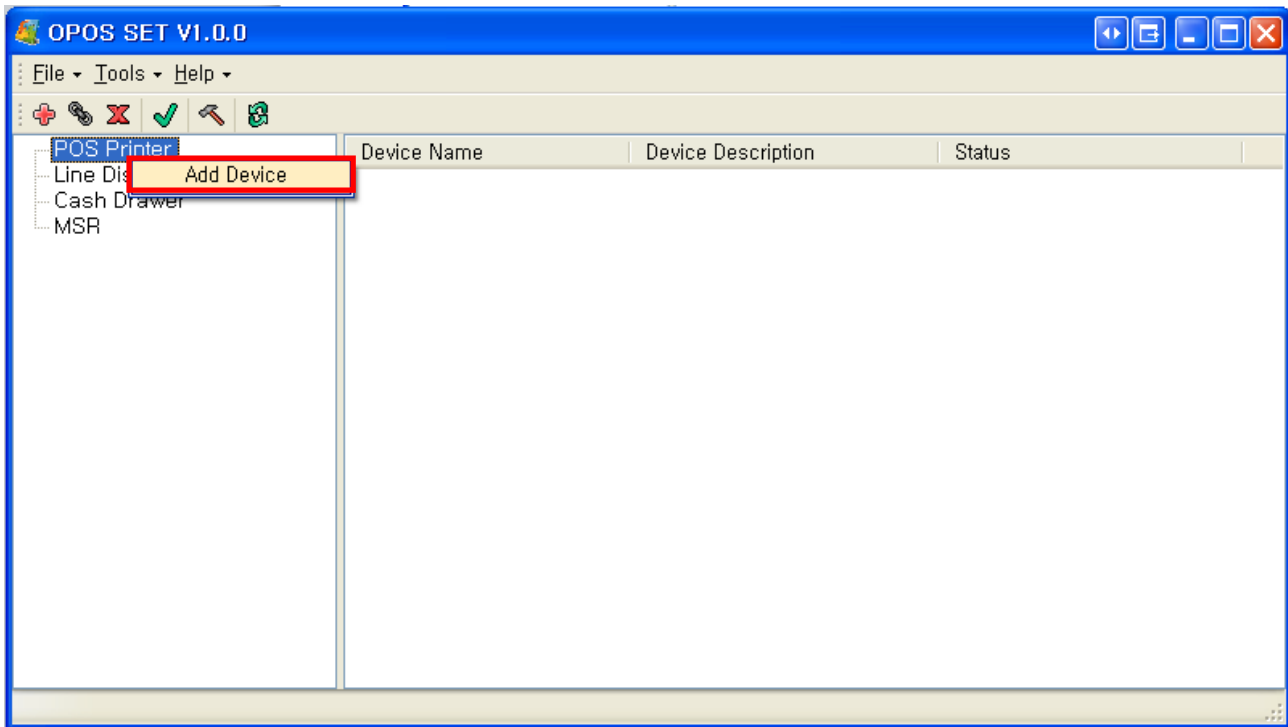
1) Three ways to open the 'Add new Device' dialog as below



[Pic No.7-1] Add an OPOS Device (Select from the menu)



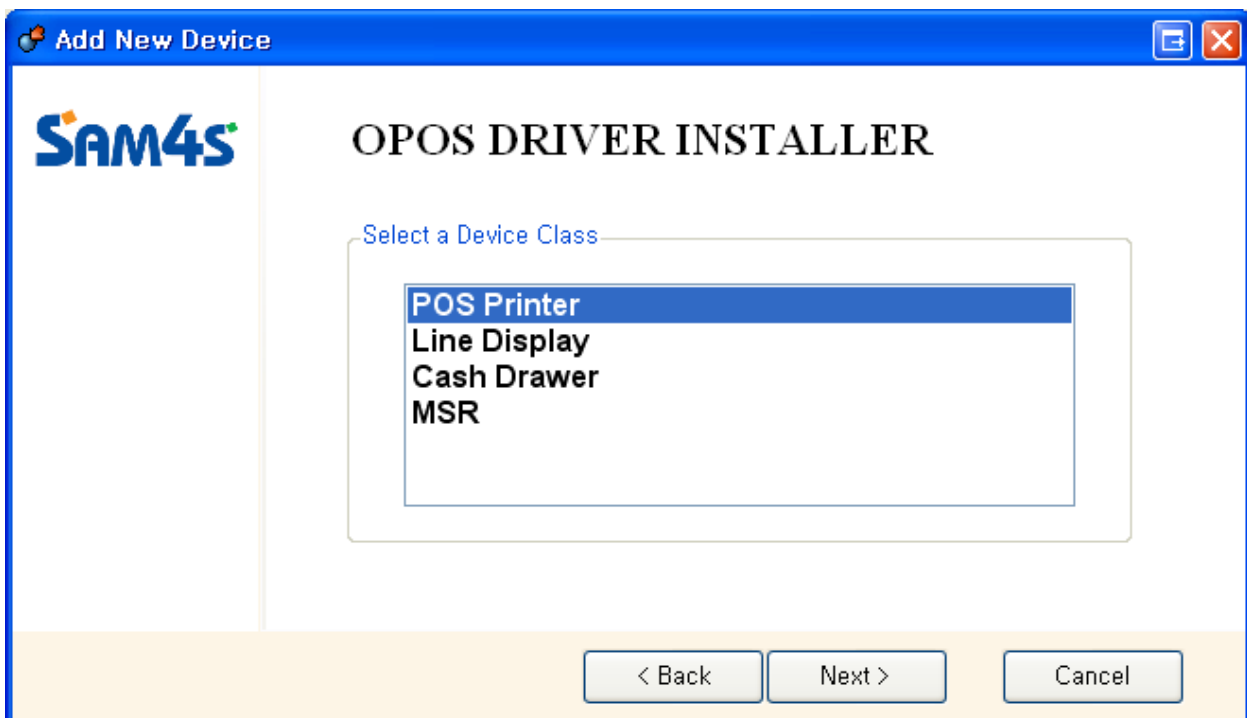
[Pic No.7-2] Add an OPOS Device (Click the button)



[Pic No.7-3] Add an OPOS Device

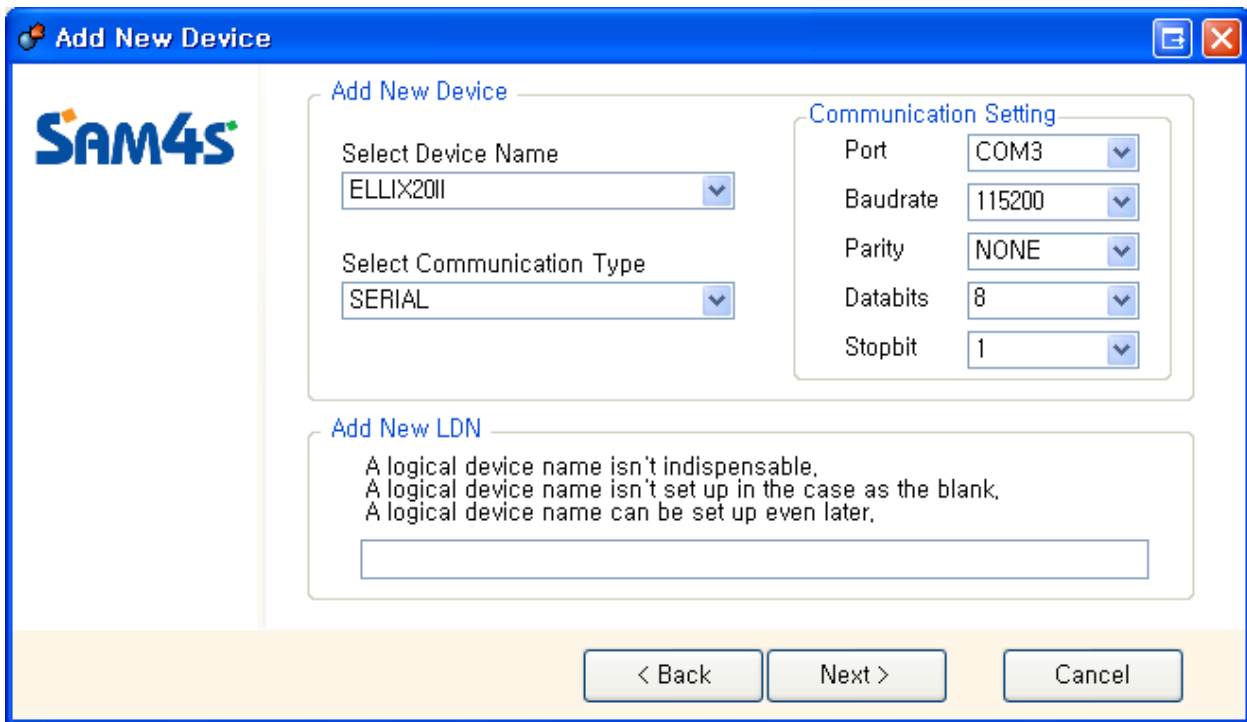
(1. Select a Device Class. 2. Right mouse button click. 3. Select the 'Add Device')

2) The 'Device Class Selection' Screen will be shown when a Device Class isn't selected or click the '< Back' button from the 'Add New Device' Screen.



[Pic No.8] Select a Device Class

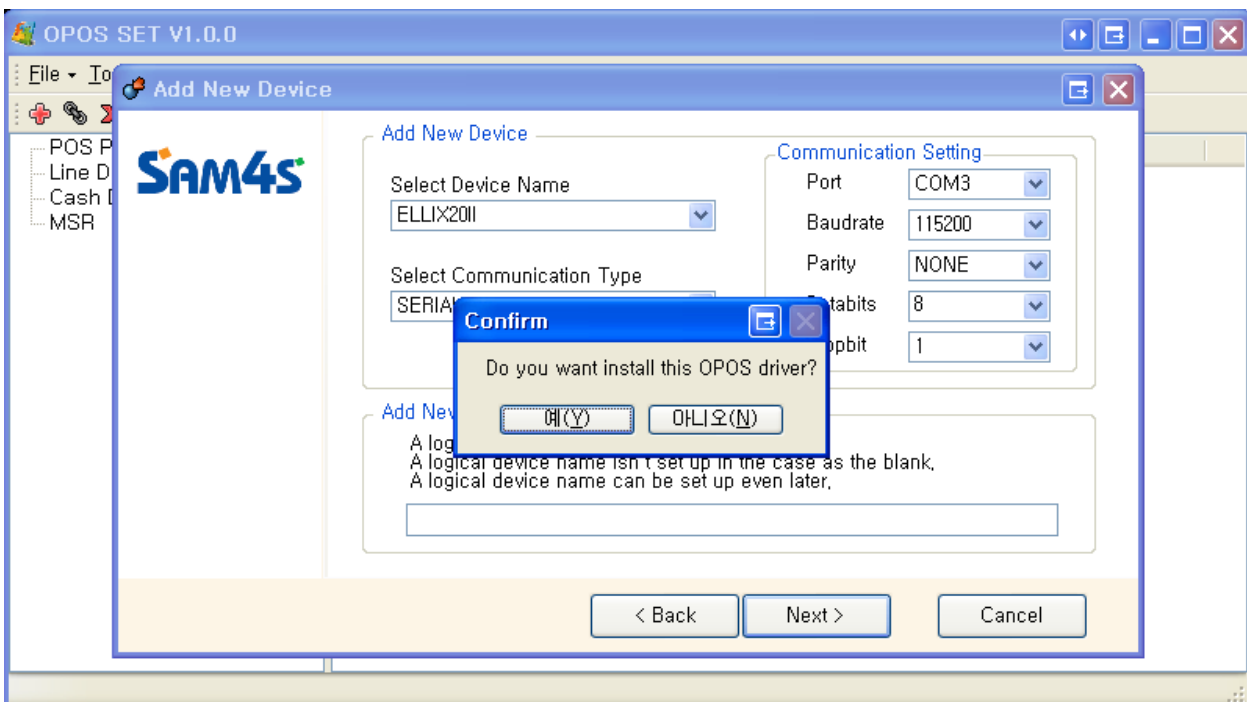
3) List of Device will be shown by selected Device Class



[Pic No.9] Add a Device

- Values of Communication Setting will be set by Communication Type
- The LDN can be set up even later

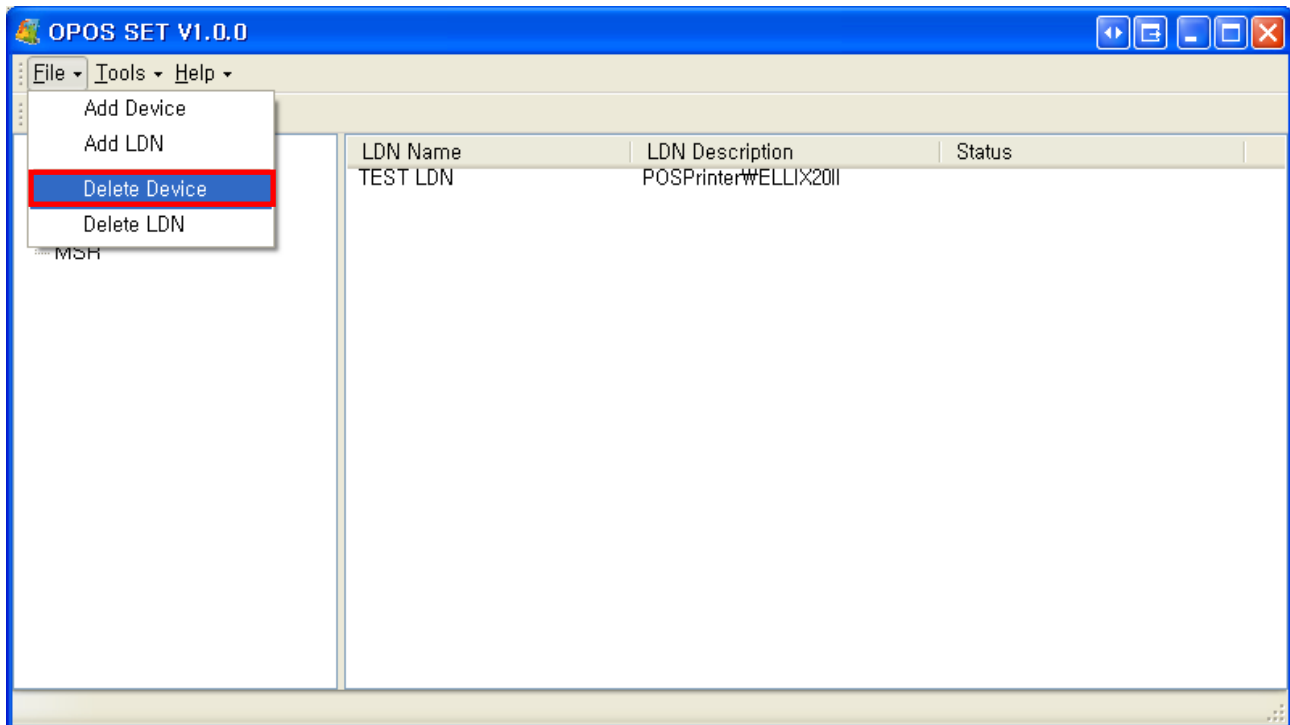
4) Click the 'Next >' button to add an OPOS Device



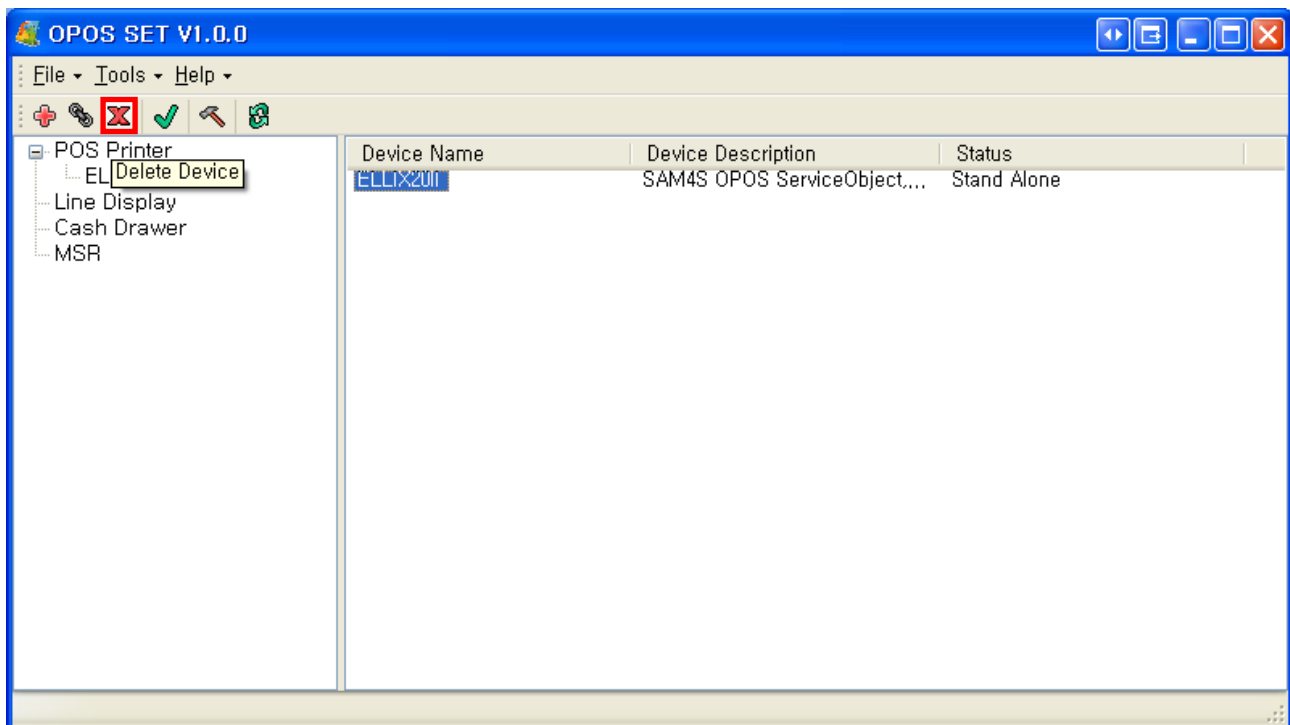
[Pic No.10] Confirmation for adding OPOS Device

## ② Remove an OPOS Device

1) Two ways to remove a selected OPOS Device as below

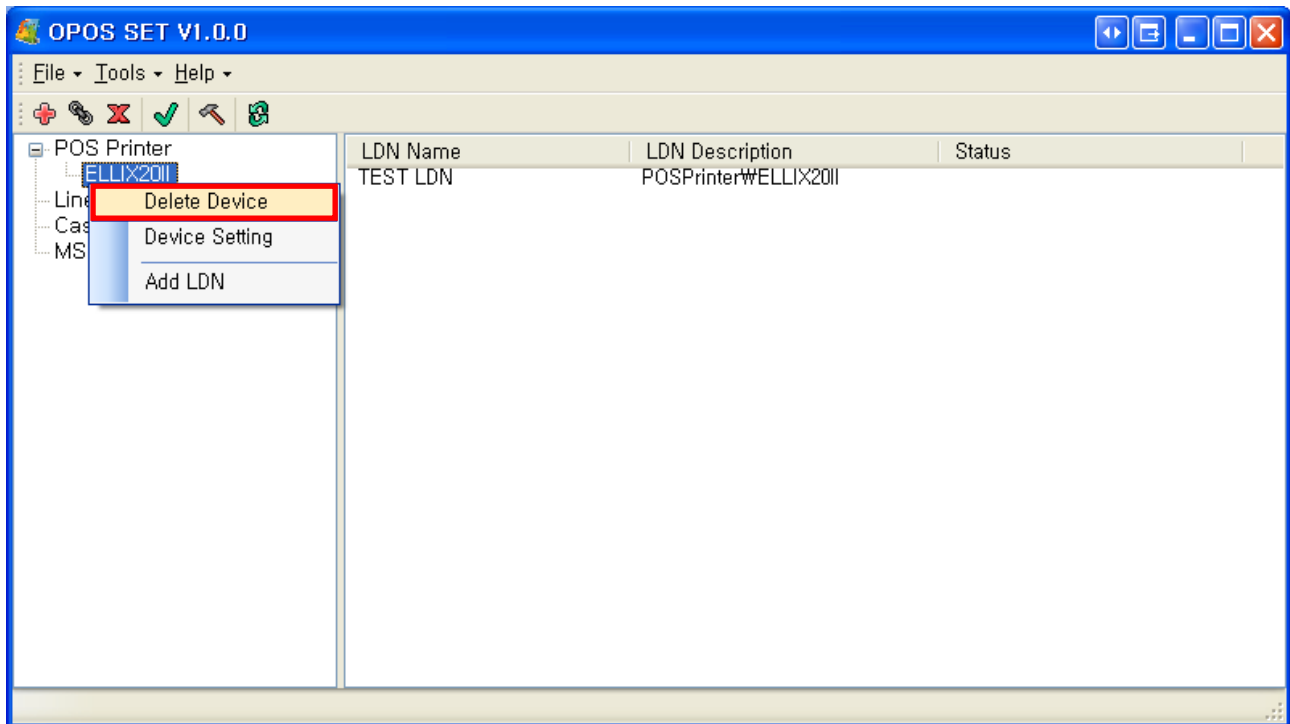


[Pic No.11-1] Remove a selected OPOS Device (Select from the menu)



[Pic No.11-2] Remove a selected OPOS Device (Click the button)

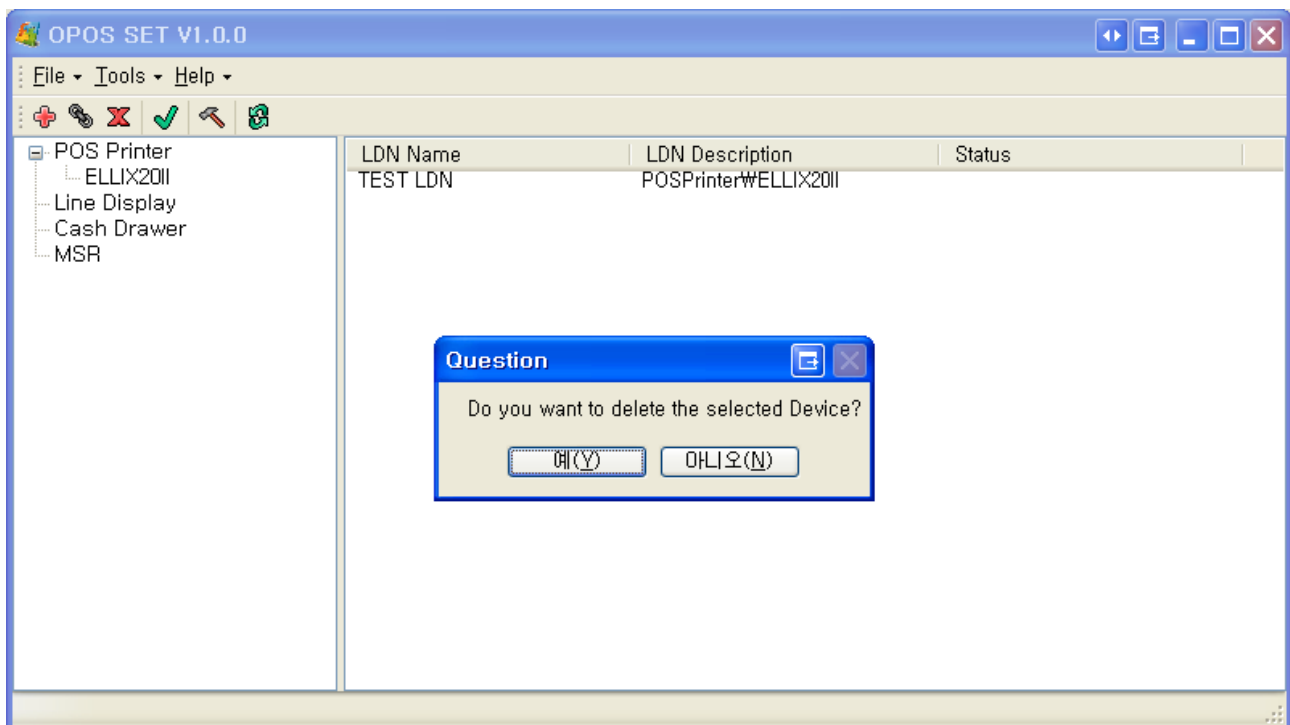




[Pic No.11-3] Remove a selected OPOS Device

(1. Select a Device. 2. Right mouse button click. 3. Select the 'Delete Device')

2) Confirmation for removing selected OPOS Device

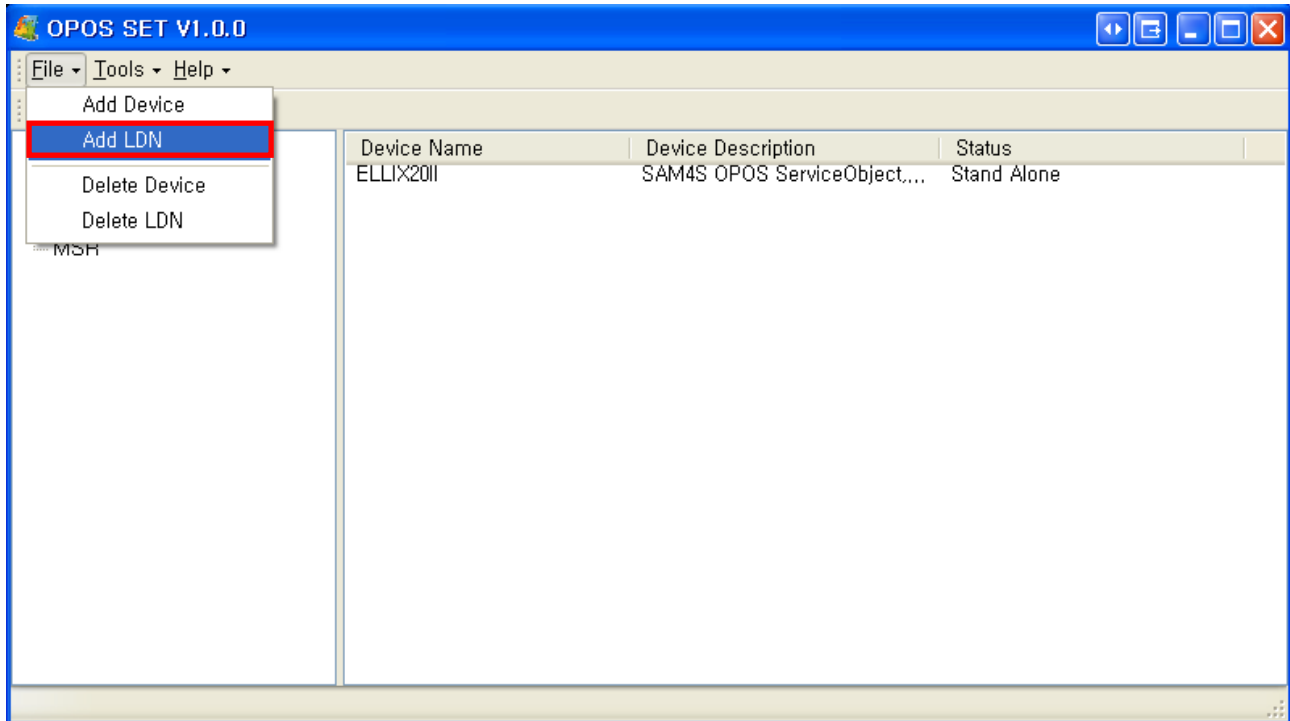


[Pic No.12] Confirmation for removing selected OPOS Device

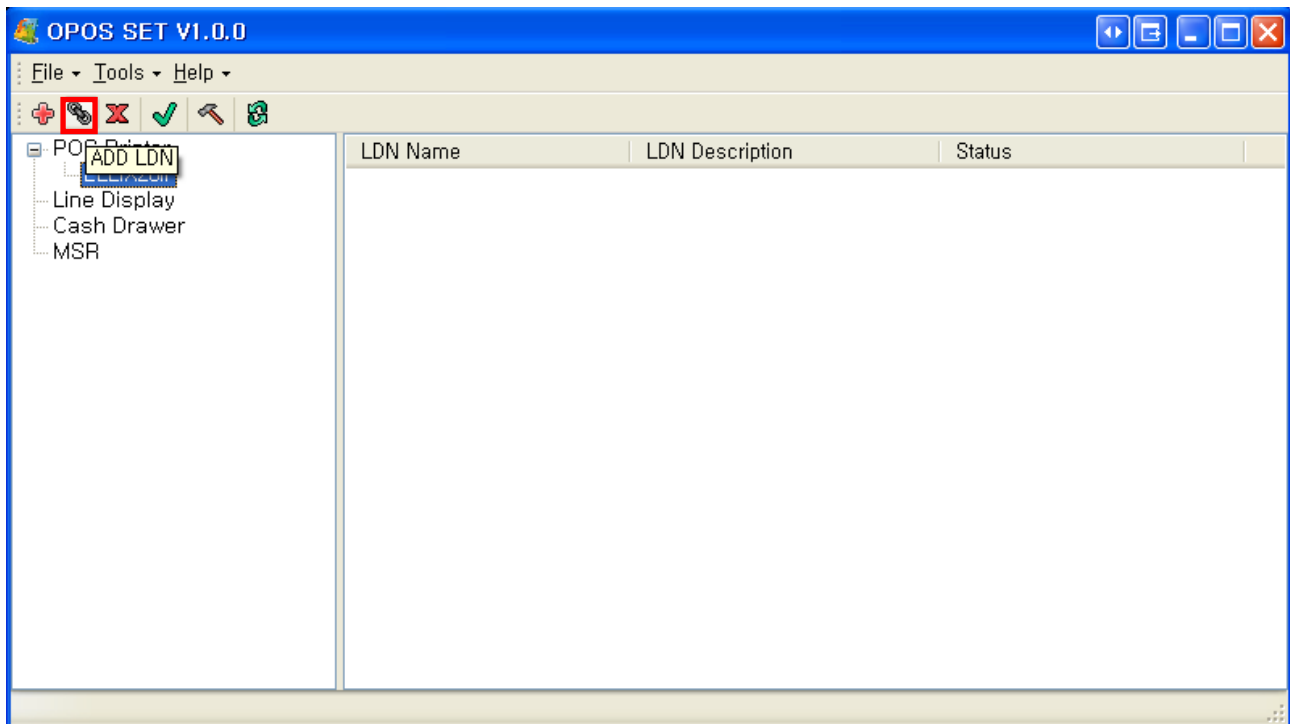
### 3. Add / Rename / Delete a LDN

#### ① Add a LDN

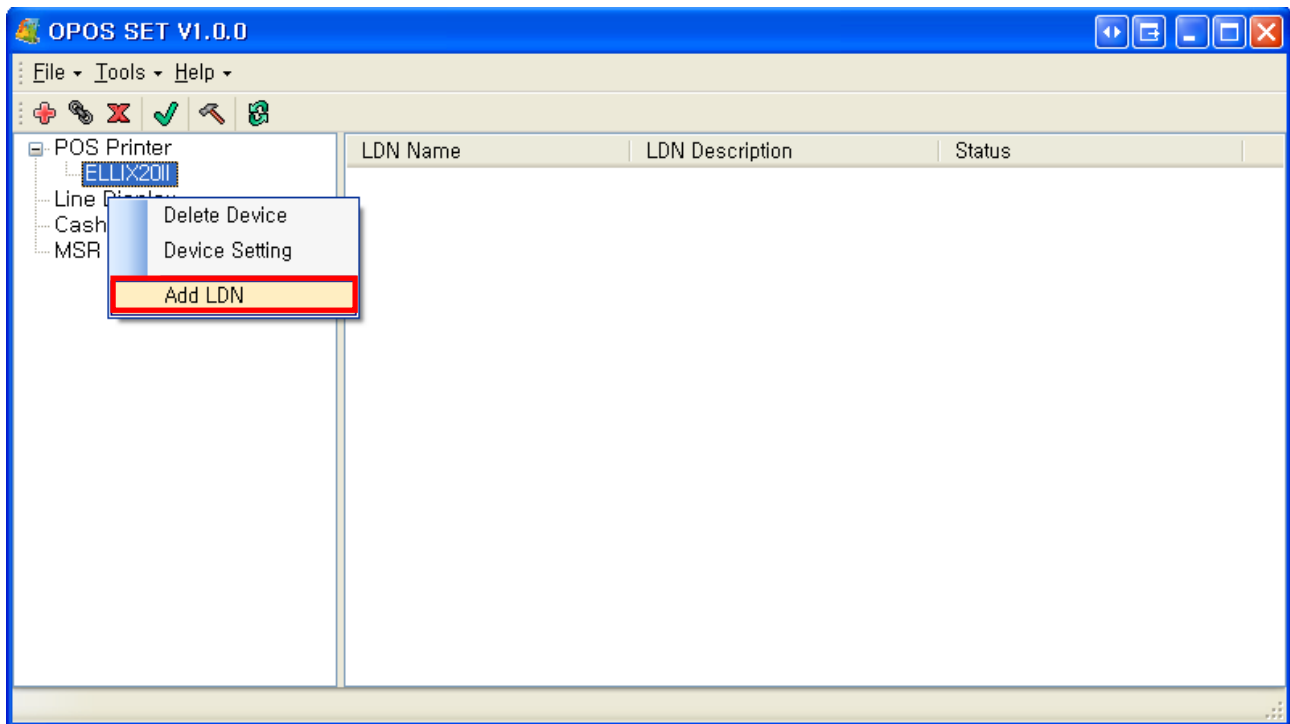
1) Three ways to open the 'Add LDN' dialog (A Device must be selected)



[Pic No.13-1] Add a LDN (Select from the menu)



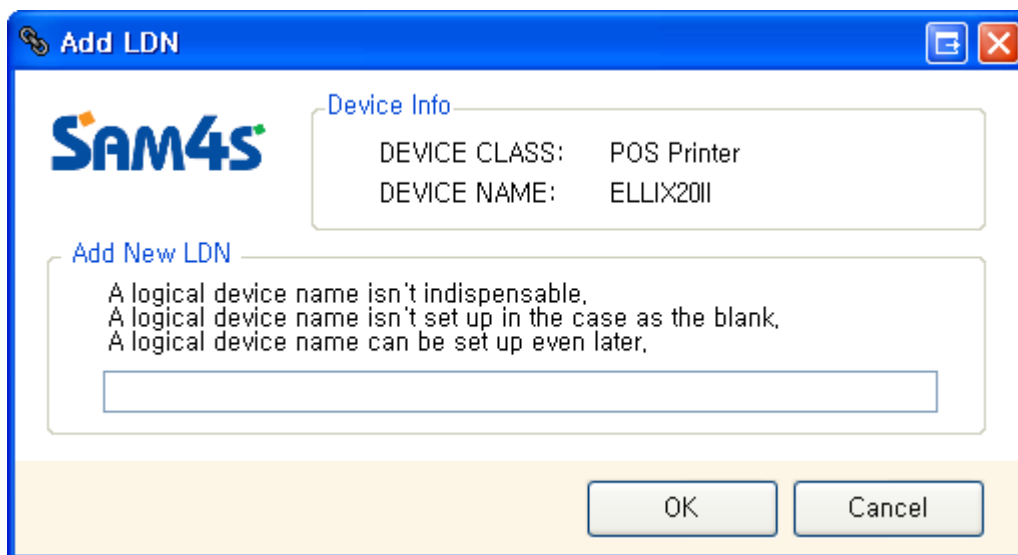
[Pic No.13-2] Add a LDN (Click the button)



[Pic No.13-3] Add a LDN

(1. Select a Device. 2. Right mouse button click. 3. Select the 'Add LDN')

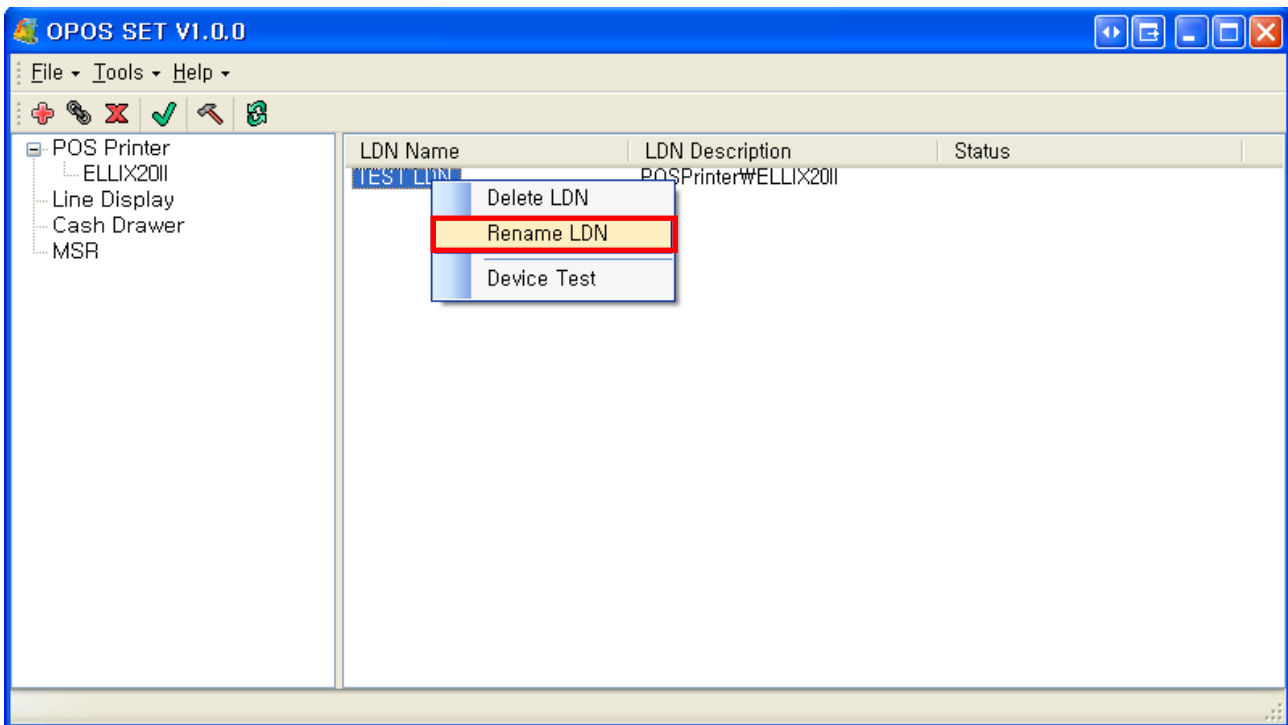
2) Fill the LDN name and click the 'OK' button to add LDN



[Pic No.14] Add LDN

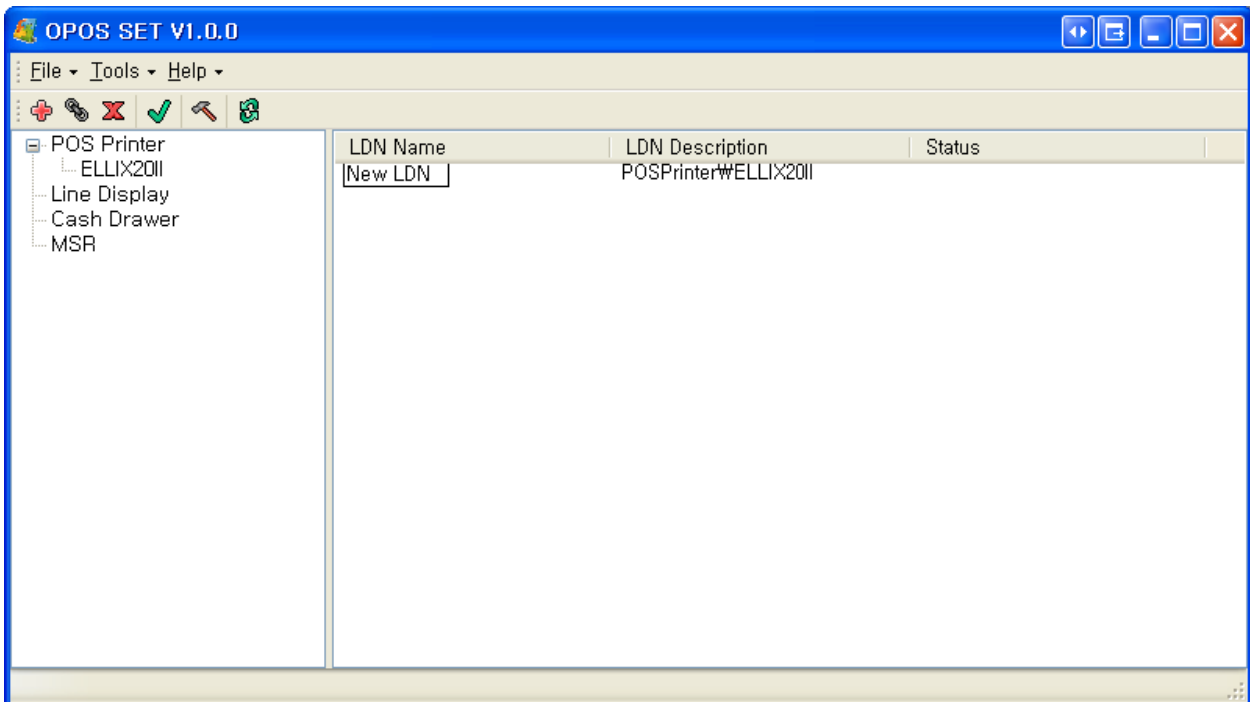
## ② Rename a LDN

1) Select a LDN, Right mouse button click and select the 'Rename LDN'



[Pic No.15] Rename LDN (Select from the menu)

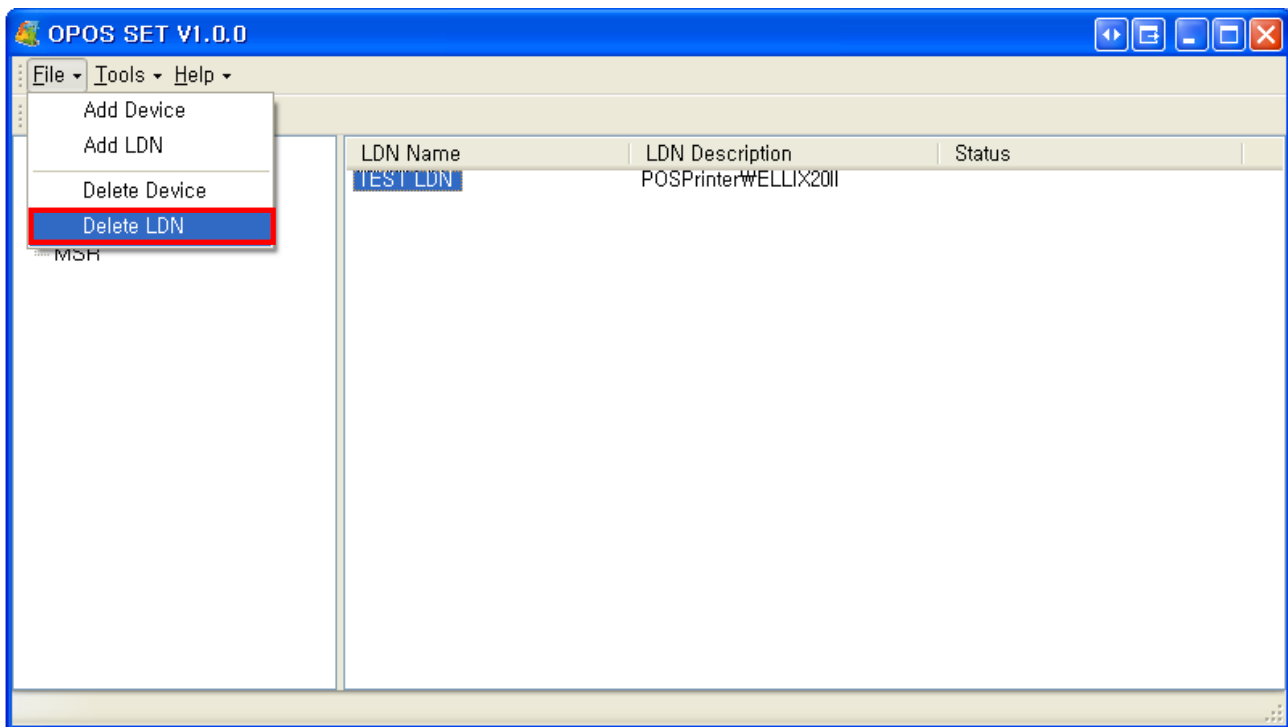
2) Fill a name for new LDN



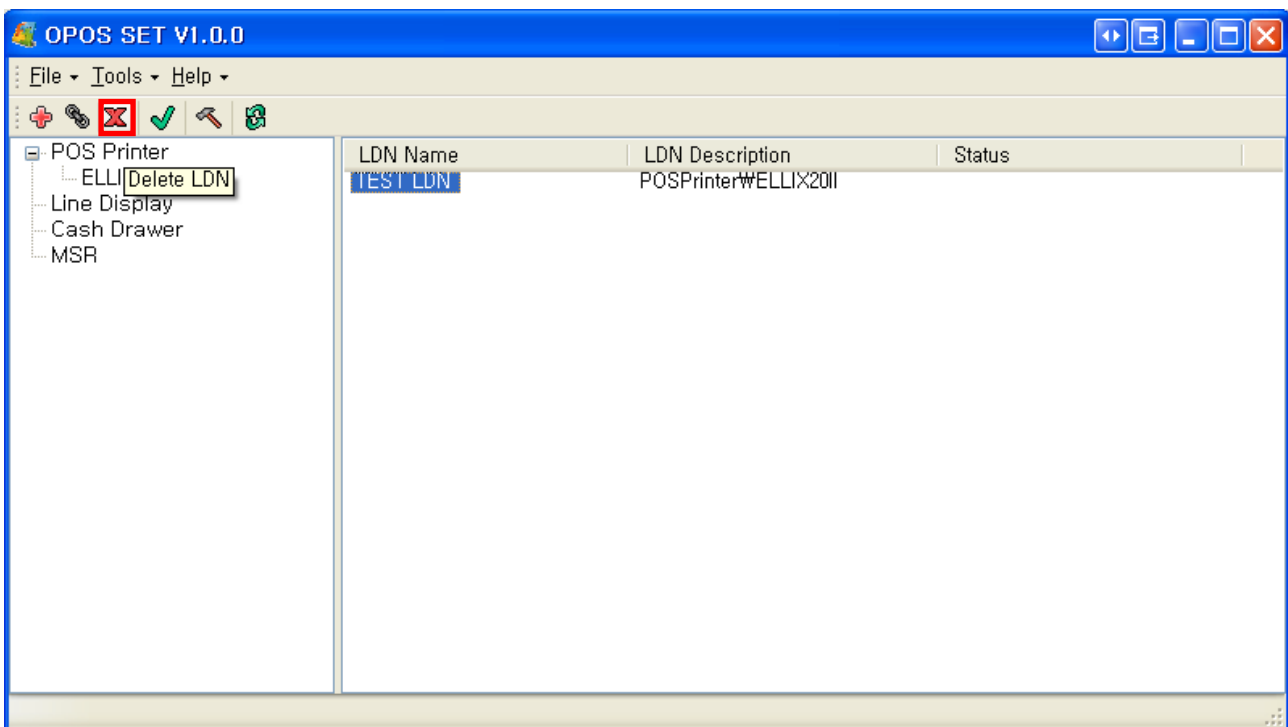
[Pic No.16] New LDN name

### ③ Remove a LDN

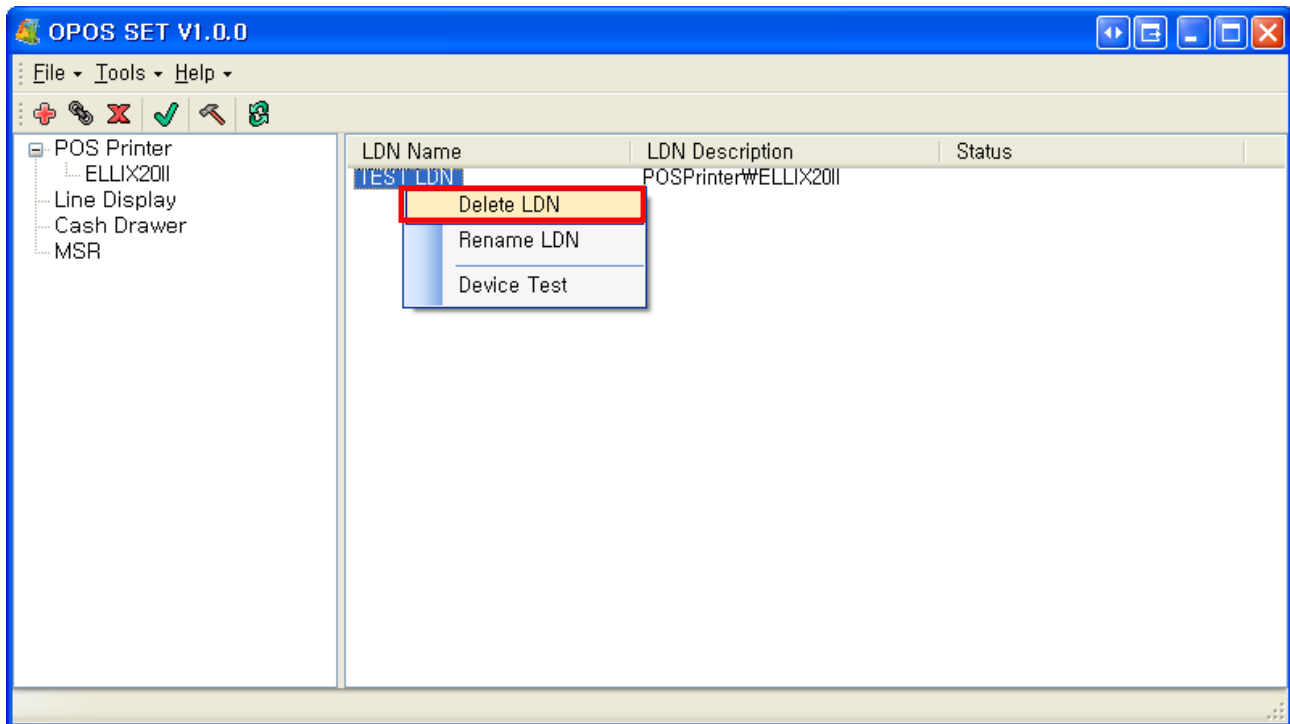
1) Three ways to remove a selected LDN as below



[Pic No.17-1] Remove a LDN (Select from the menu)



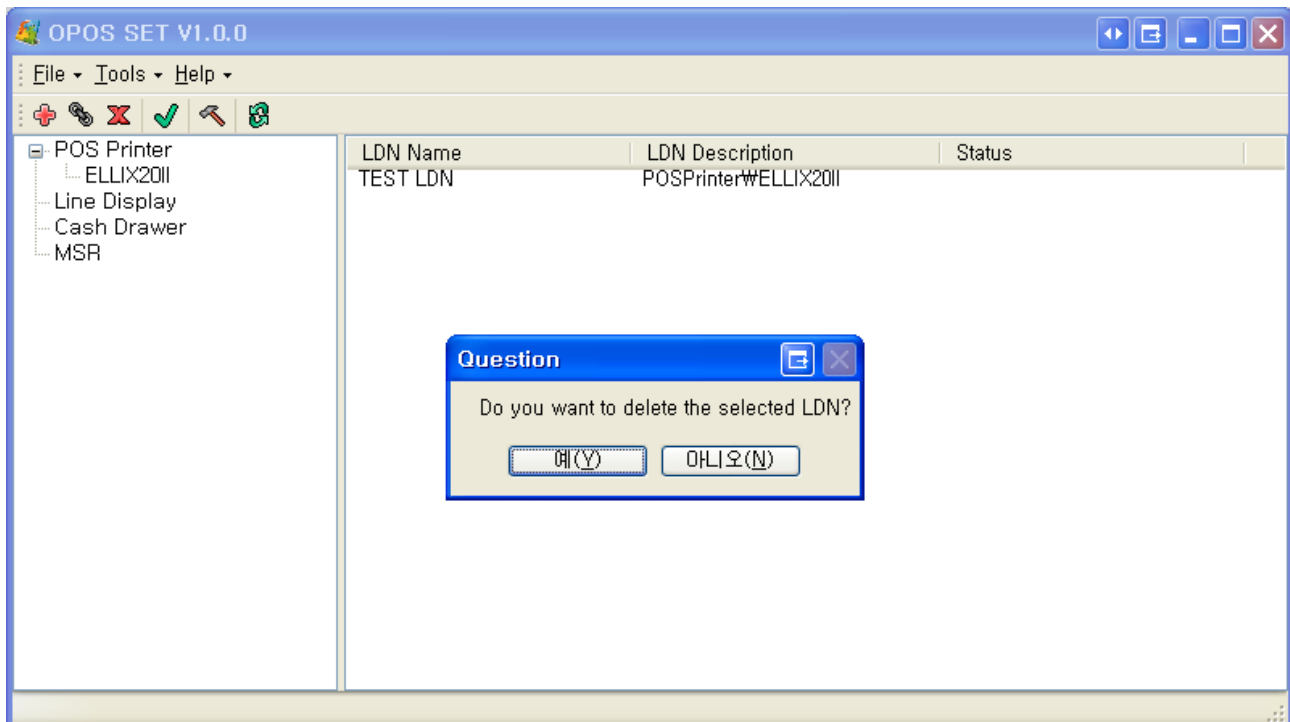
[Pic No.17-2] Remove a LDN (Click the button)



[Pic No.17-3] Remove a LND

(1. Select a LDN. 2. Right mouse button click. 3. Select the 'Delete LDN')

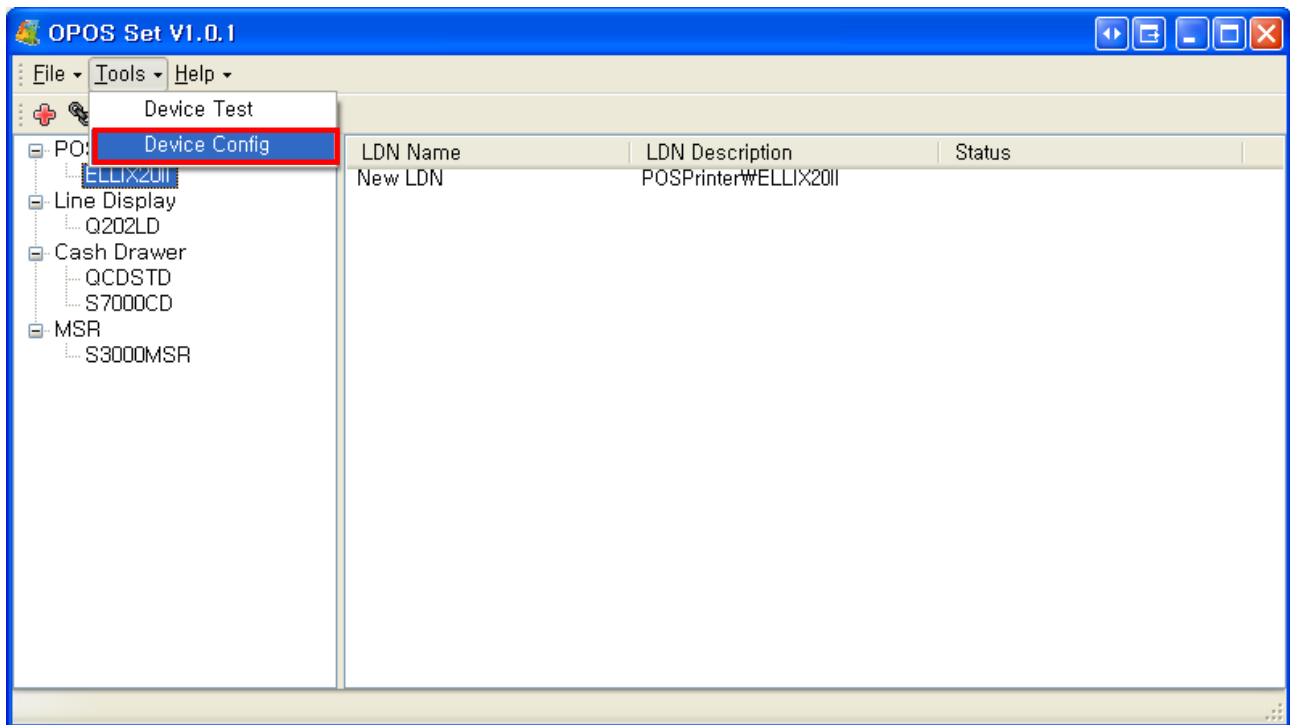
2) Confirmation for removing selected LDN



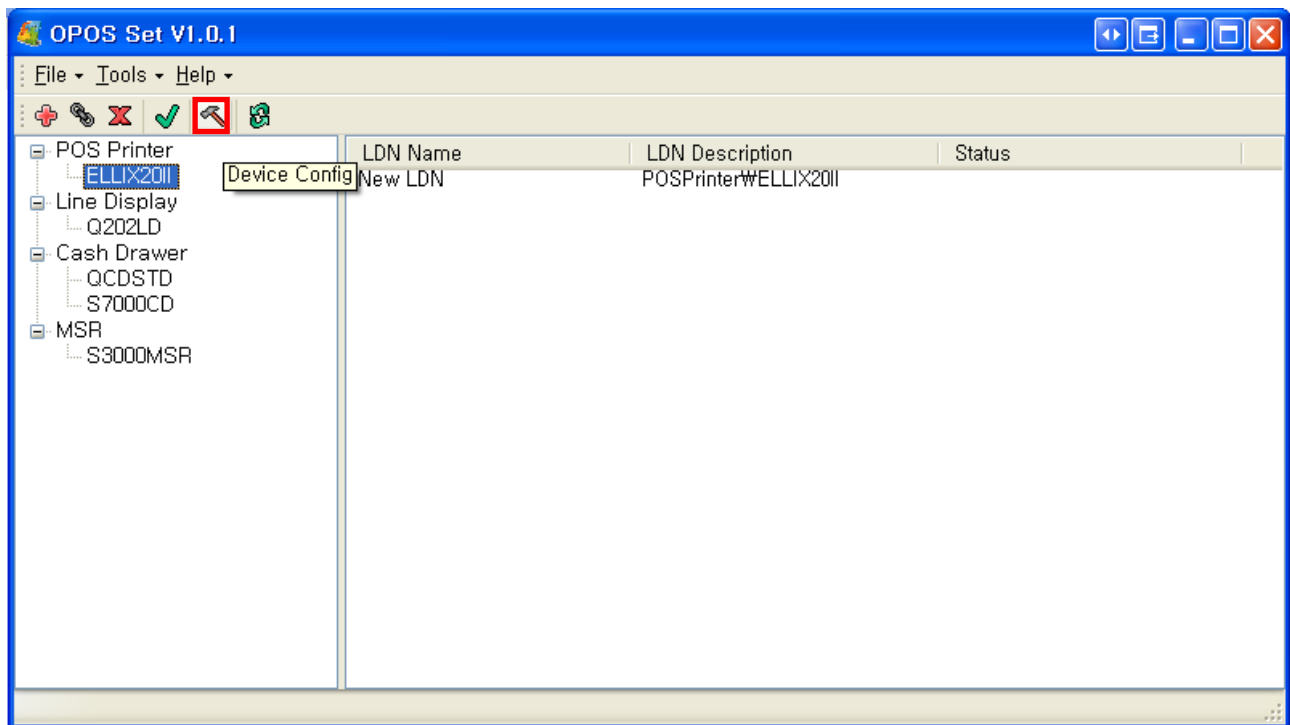
[Pic No.18] Confirmation for removing selected LDN

#### 4. Configurations for OPOS Device

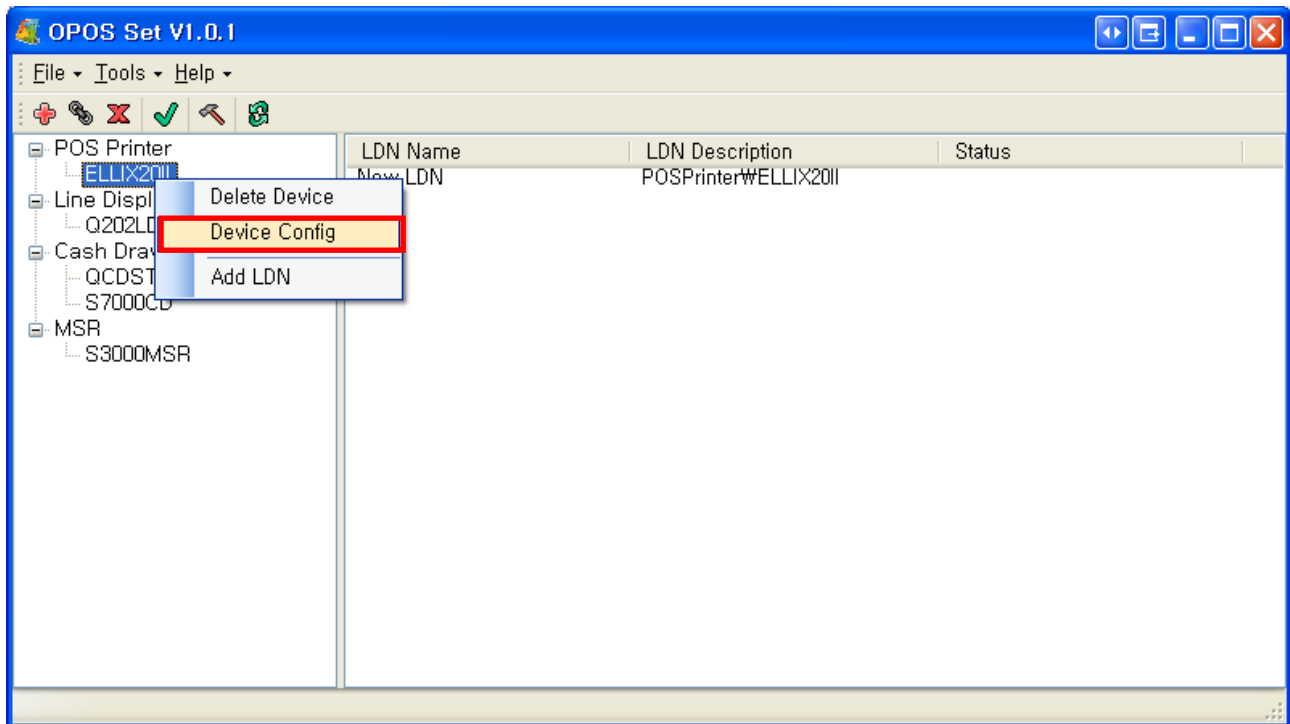
1) Three ways to open the 'Device Config' dialog (A Device must be selected)



[Pic No.19-1] Configurations for OPOS Device (Select from the menu)



[Pic No.19-2] Configurations for OPOS Device (Click the button)

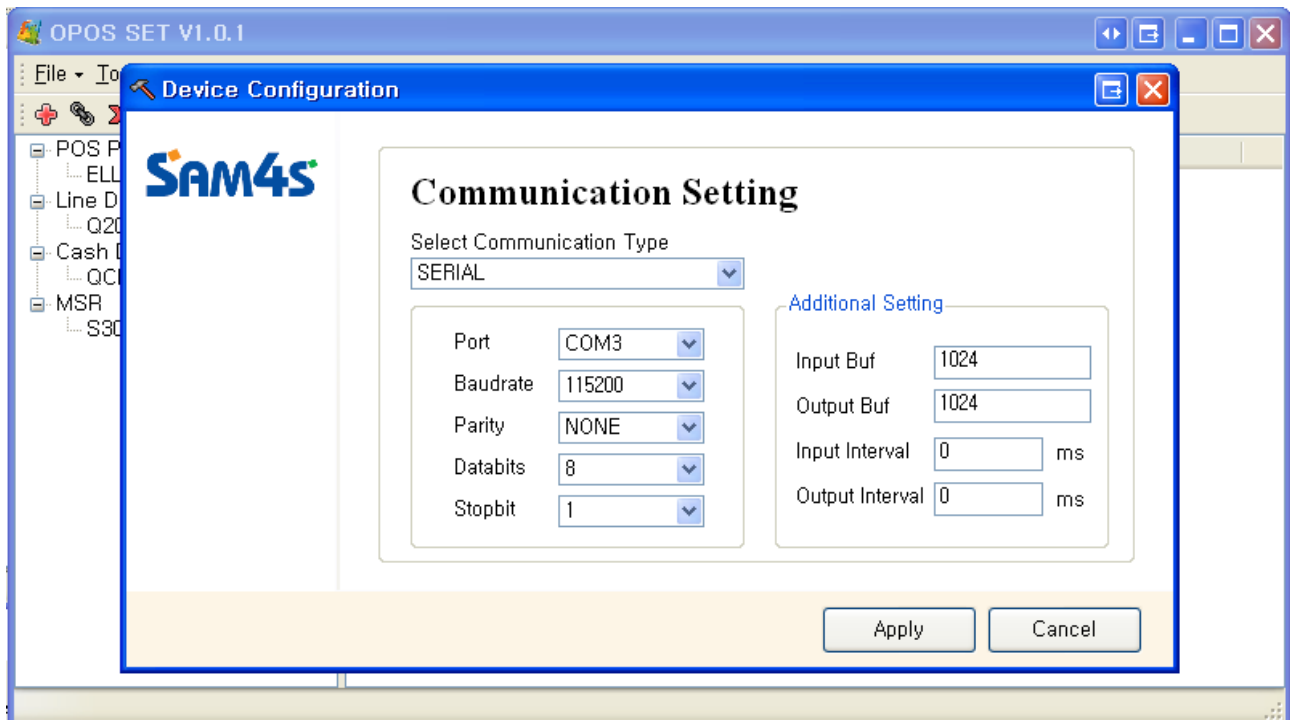


[Pic No.19-3] Configurations for OPOS Device

(1. Select a Device. 2. Right mouse button click. 3. Select the 'Device Config')

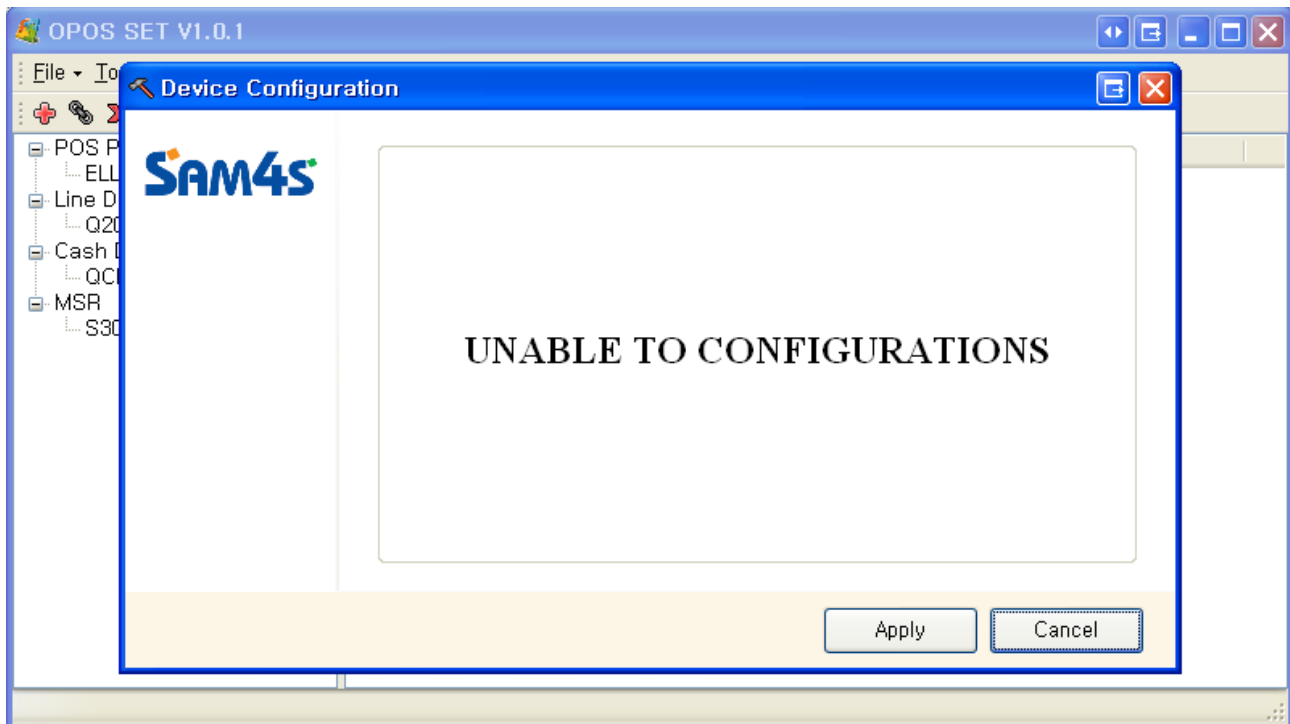
2) 'Device Configuration' screen will be set depending on the selected OPOS Device

If configurations for the selected OPOS Device are unable, notification message will be shown.



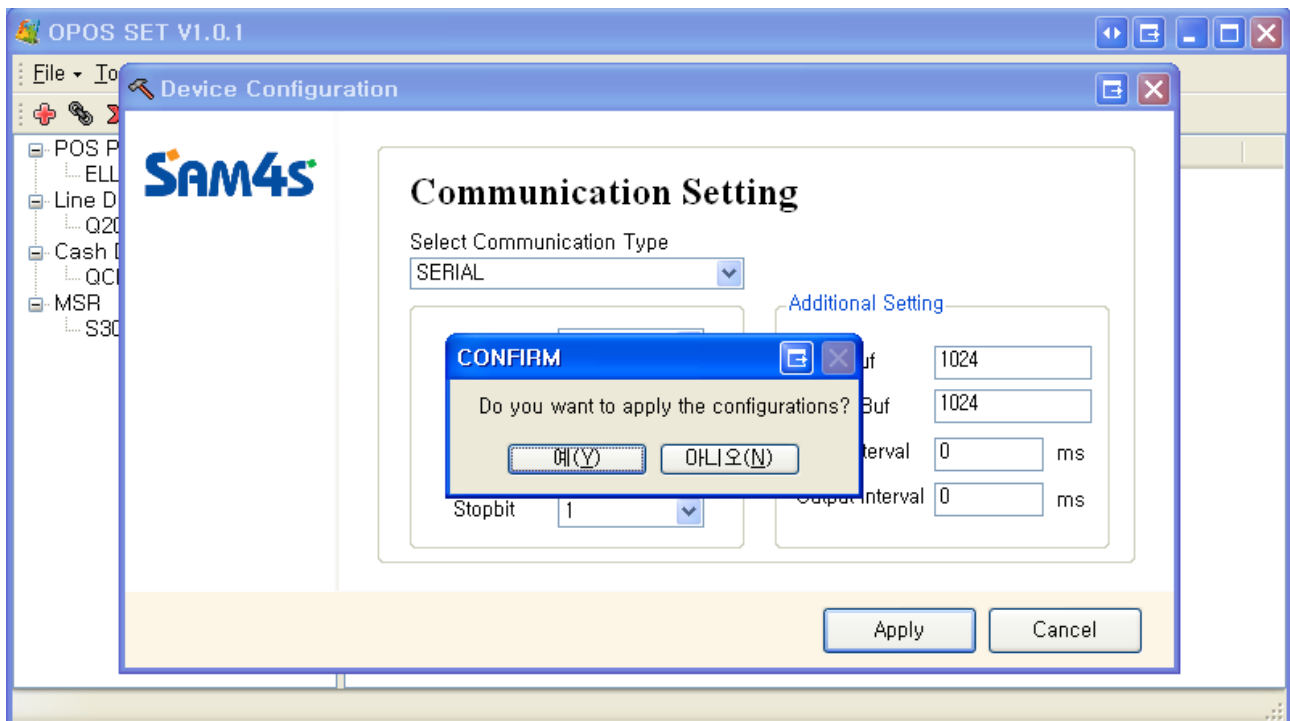
[Pic No.20-1] Configurations for Device





[Pic No.20-2] Configurations are unable

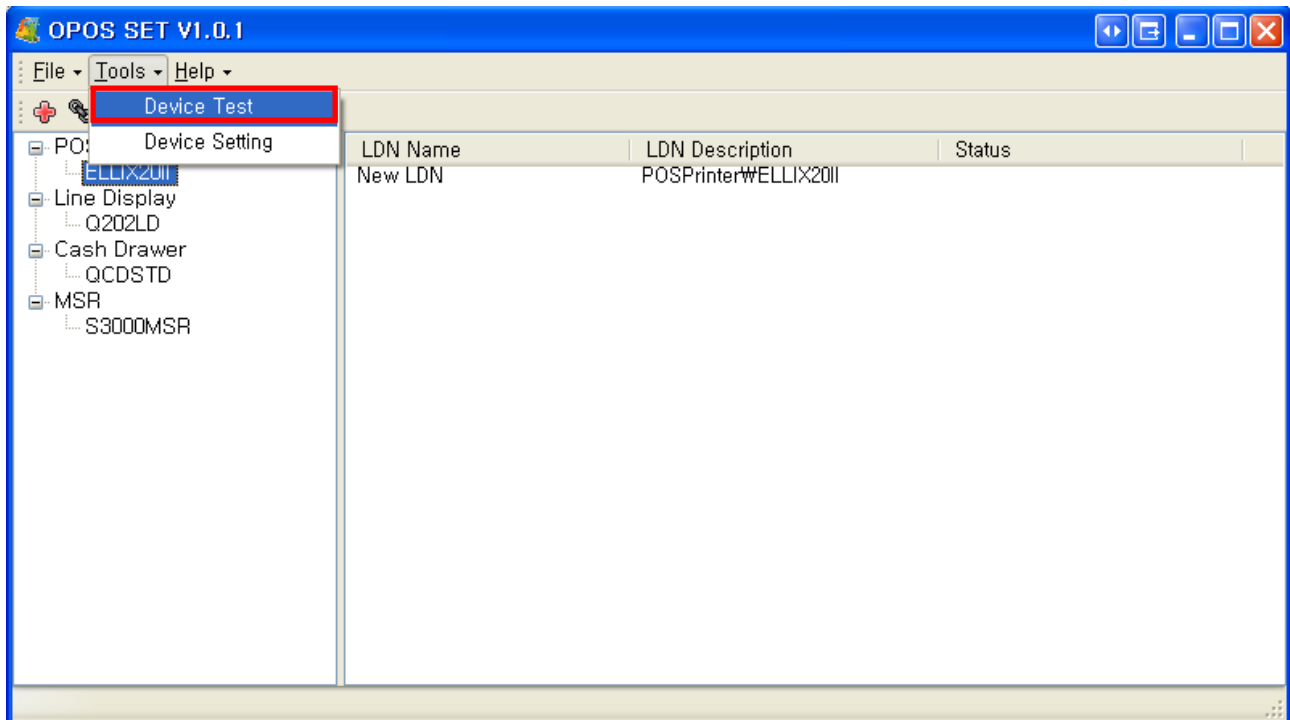
3) Click the 'Apply' button to apply configurations. Or click the 'Cancel' to cancel configurations



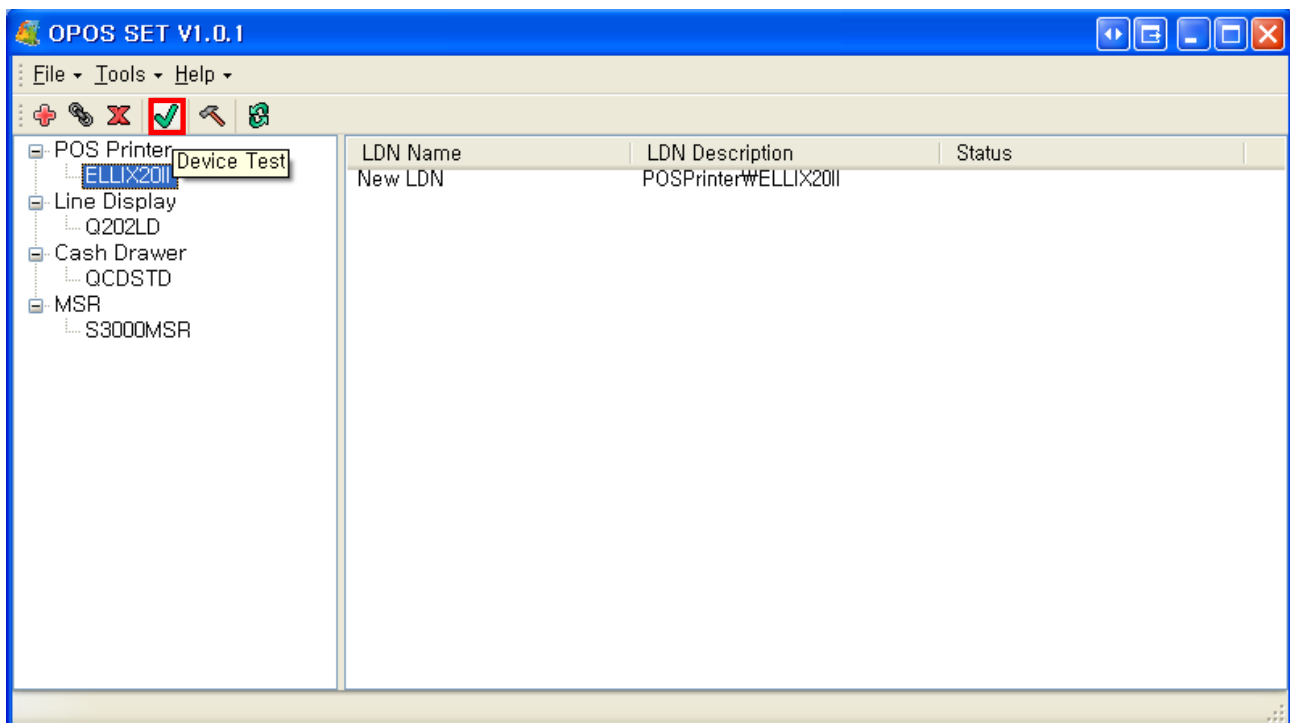
[Pic No.21] Confirmation for configurations

## 5. Testing for OPOS Device

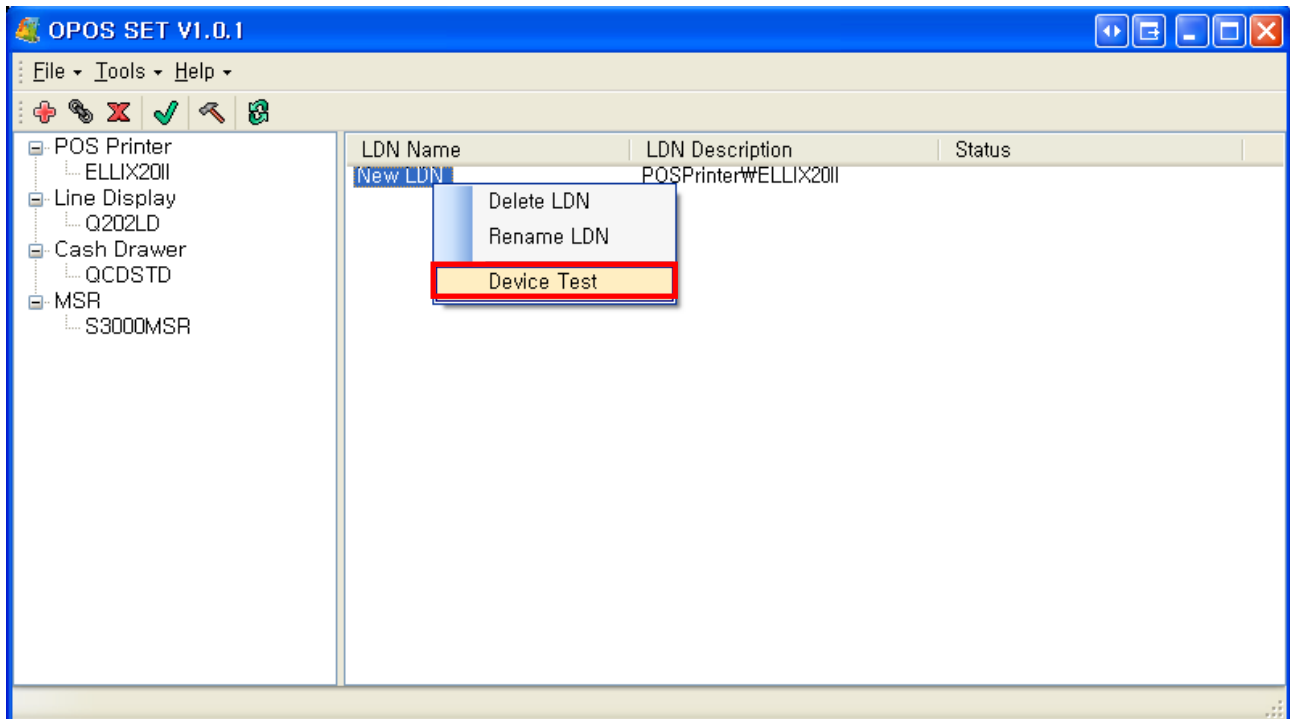
1) Three ways to open the 'Device Test' dialog (A Device must be selected)



[Pic No.22-1] Testing for OPOS Device (Select from the menu)



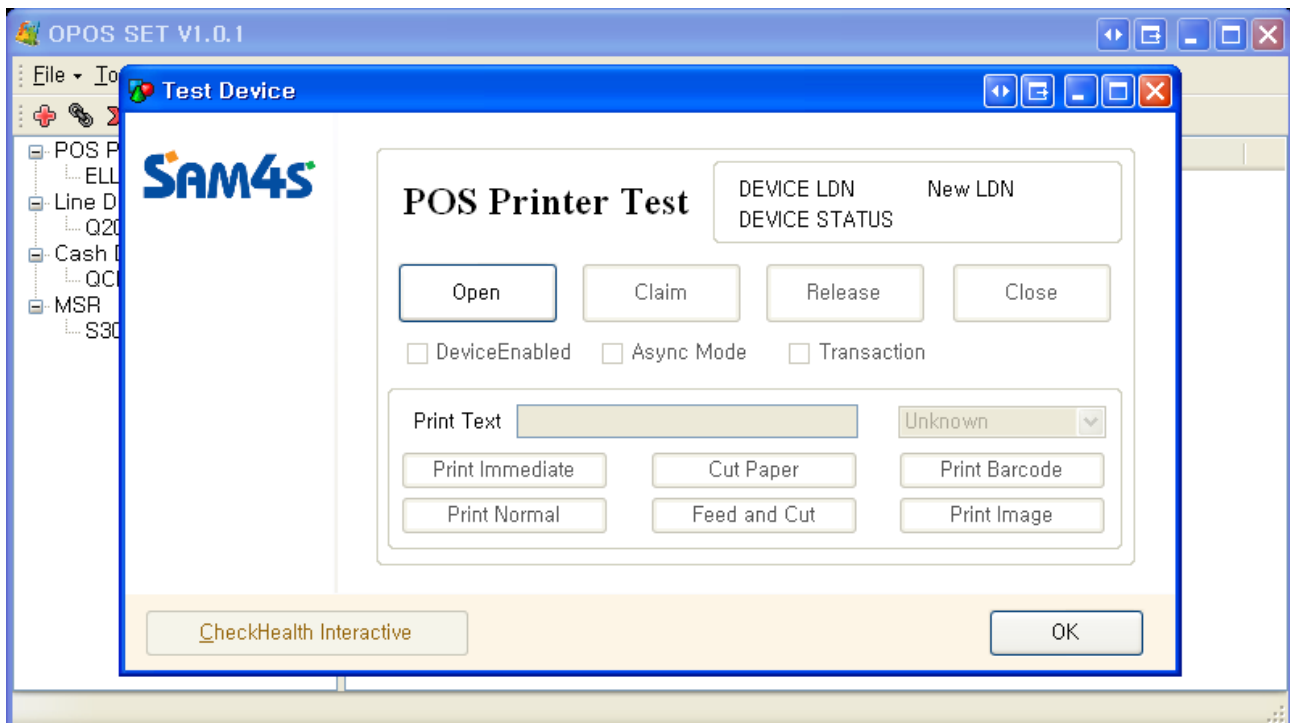
[Pic No.22-2] Testing for OPOS Device (Click the button)



[Pic No.22-3] Testing for OPOS Device

(1. Select a LDN. 2. Right mouse button click. 3. Select the 'Device Test')

2 'Test Device' screen will be set depending on the selected OPOS Device



[Pic No.23] Test Device